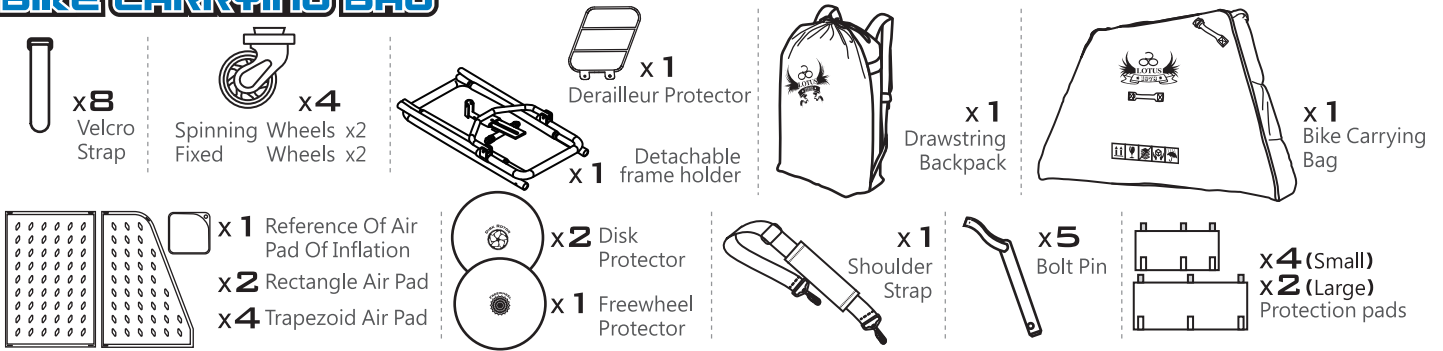


GO EASY BIKE CARRYING BAG

SH-5313

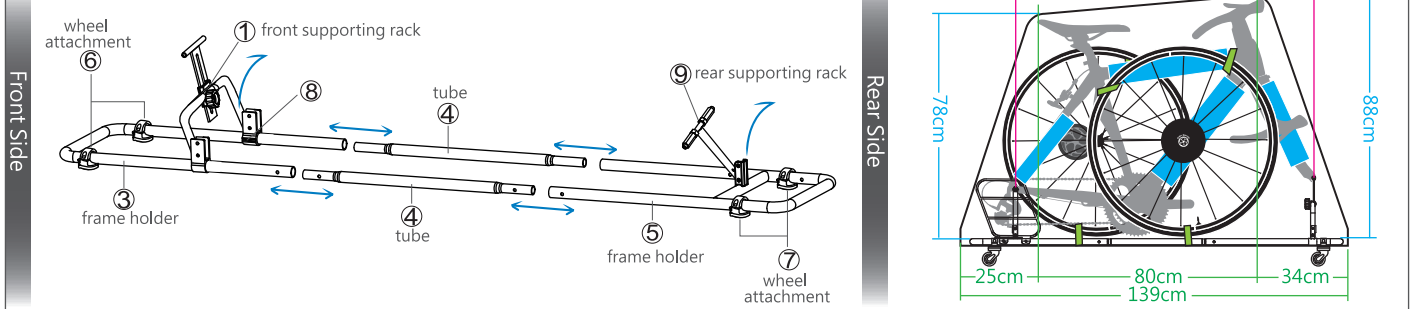
PLEASE READ AND SAVE THE INSTRUCTION



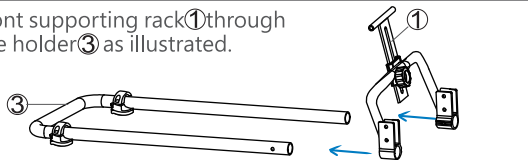
Follow The Detailed Diagram Instructions

Max dimension of bag

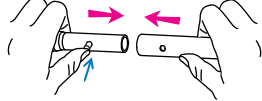
This product may be adjusted to fit different bicycle sizes.



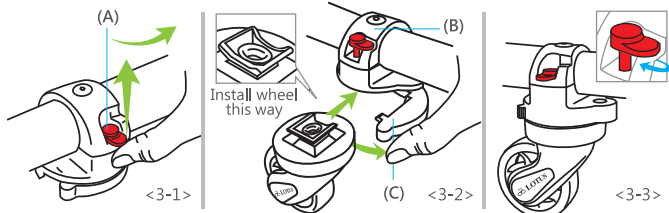
1) Install front supporting rack ① through the frame holder ③ as illustrated.



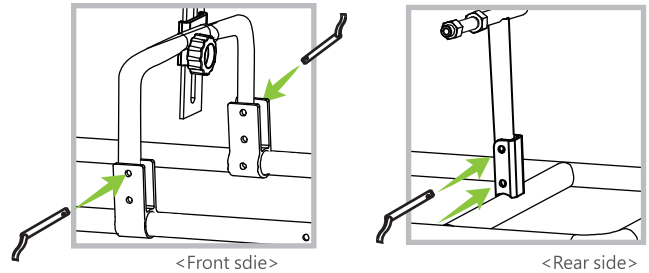
2) Install tube ④ and frame holder ③⑤ by pressing down on the spring button until it clicks together.



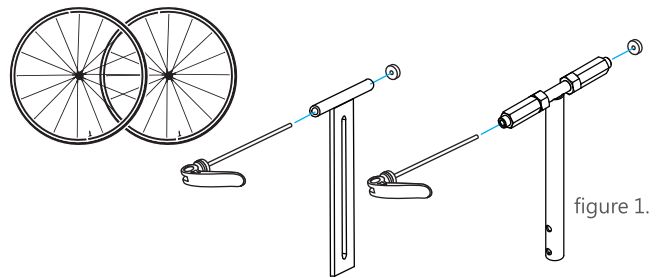
3)3-1: Please pull up and then turn the safety lever(A) to right hand side.
3-2: Open the cap(C) of wheel base (B). Close the cap after installation of the wheel into the base.
3-3: Turn the safety lever to the left, and push down the safety lever. Ensure the wheels are secured before using the bag.



4) Insert the bolt pins to secure the front and rear racks.; place the front/rear forks on the supporting racks. ①⑨



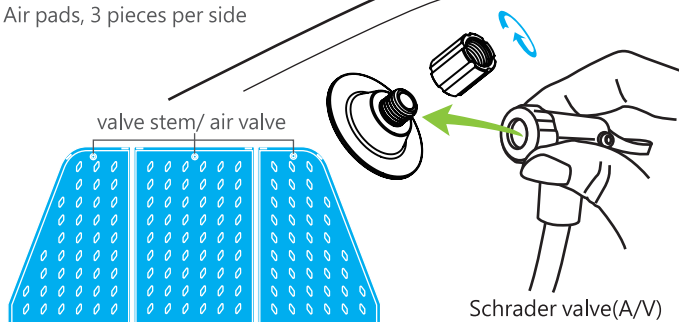
5) Before removing the rear wheel of your bicycle, select the gear that uses the least amount of chain; To make sure your front and rear gear are in the smallest chain.
6) Open the brake if necessary.
7) Remove quick release units from wheel and then install them into frame holder as show on figure 1. (Do not tighten the bicycle wheels yet, further adjustments will follow below)



Air pad installation

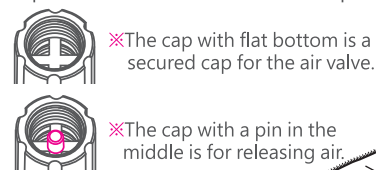
Air pads, 3 pieces per side

<Front side of frame holder> use the spinning wheels
<Rear side of frame holder> use the fixed wheels



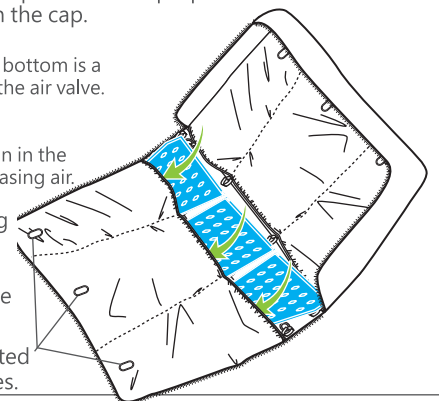
Please do not inflate air into the air pads more than 1 psi or harder than reference of air pads of inflation. It may cause damaged air pads. LOTUS do not take any responsibility if users over inflate air to the air pads.

1) Use schrader valve to pump the air until proper pressure and secure with the cap.



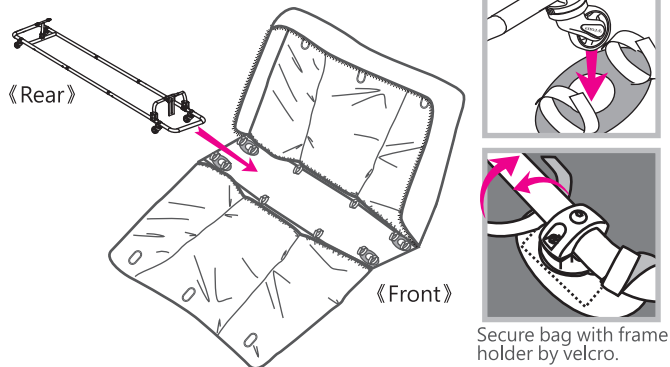
2) Open the bicycle carrying bag, insert the inflated air pads in the appropriate pockets and secure with the velcro straps.

Air may be adjusted from the air valves.

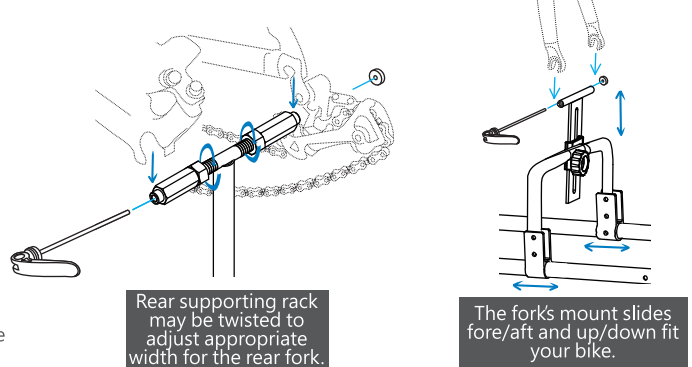


Air Pad And Bike Rack/Bike Installation

1) Insert the installed rack inside the bag. The four wheels go through the four openings on the bottom. Use velcro straps to secure the rack.



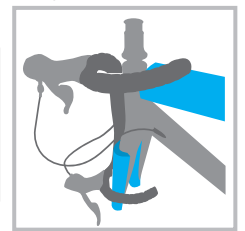
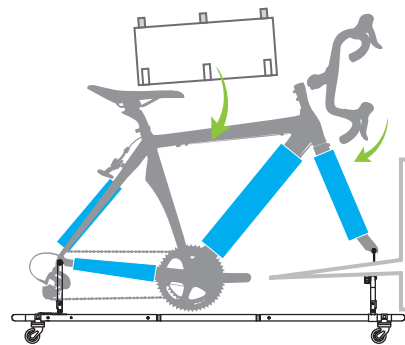
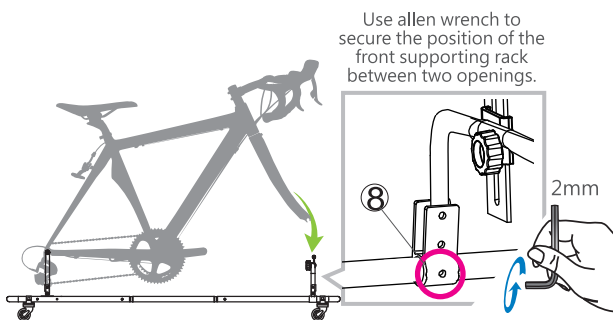
2) Adjust the distance between rear/front forks according to your bicycle size. Make sure your front and rear gear are in the biggest chain.



3) Install the rear fork to rear supporting rack and front fork to the front supporting rack. Secure the frame by using the quick release units.

4) Wrap the protection pad around the frame, and secure it by velcro.

5) Handlebar, saddle, pedals may be removed and stored apart if necessary. The handlebar can be secured on to the head tube with velcro strap. The other parts may be stored away in the pockets.

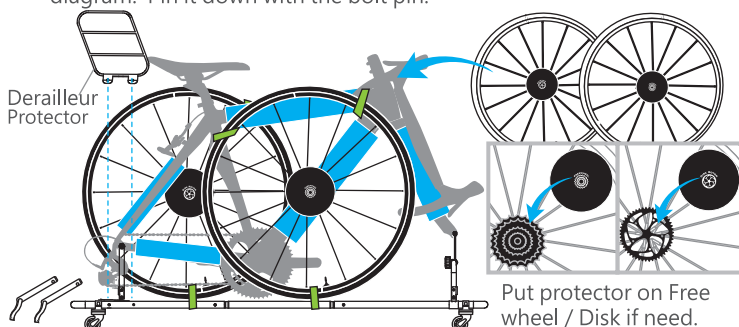


6) Position the wheels on each side of the bike and secure the wheels, bike and protector frame holder with velcro straps.

8) Close the bag and you are ready to go.

7) Place the Derailleur Protector as shown on the diagram. Pin it down with the bolt pin.

It comes with lockable zipper sliders for lock.



padded handle design. Comfortable and easy to use.



How to store the bicycle carrying bag into the backpack

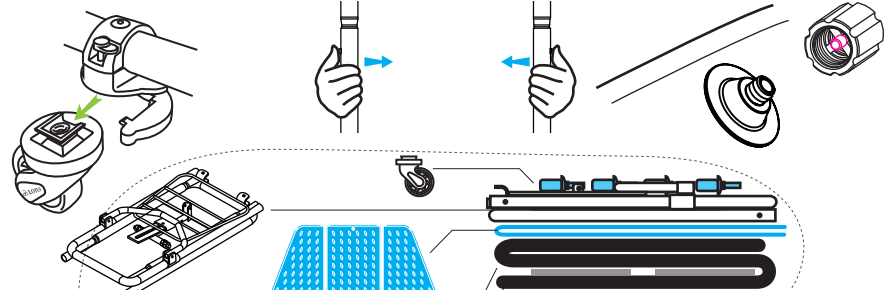
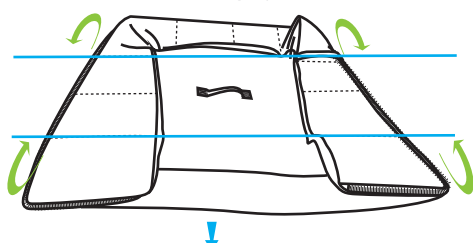
1) Take air pads and frame holder off the bicycle carrying bag.

5) Only remove the rolling wheels from the wheel set. Leave its base on the frame holder.

6) Press both spring buttons to separate frame holder.

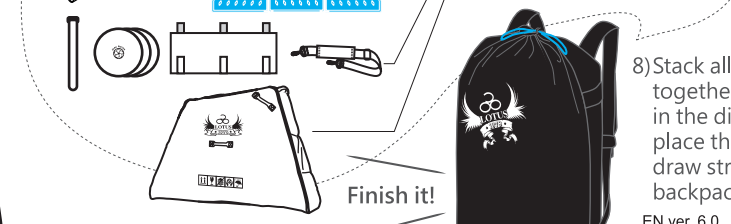
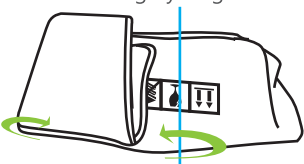
7) Screw tight the cap with a pin to deflate air.

2) Turn the bag upside down, follow the blue line, fold the bag by 3.



3) As shown on the diagram, fold the bag by 3 again.

4) Bag folded.



8) Stack all the items together as shown in the diagram, place them in the draw string backpack.

EN ver. 6.0 2016/11/1
MADE IN TAIWAN

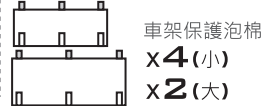
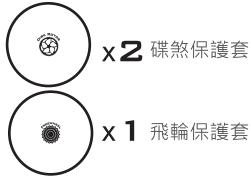
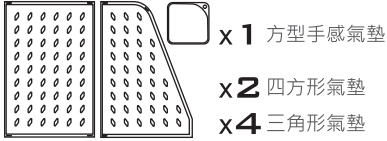
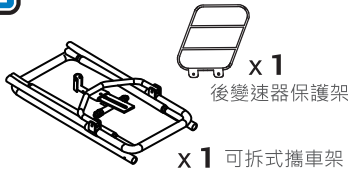


- The GO EASY bike carrying bag cannot be checked in as a carry on bag on the airplanes.
- Keep the bicycle carrying bag, storage bag, and other parts away from children. They are not toys.
- Do not walk, stand, jump, or lie on the air pad.
- Do not use air pad on or near water, this is not a raft.
- All air pads are 100% tested before delivery. Do not over inflate, it may cause air pads blow out or leaking air.

GO EASY SH-5313

BIKE CARRYING BAG

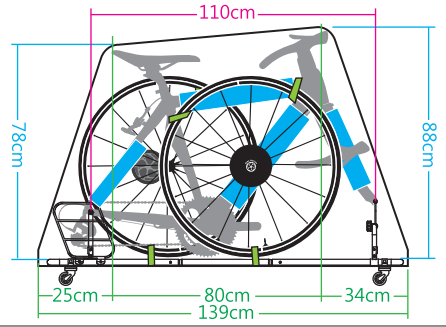
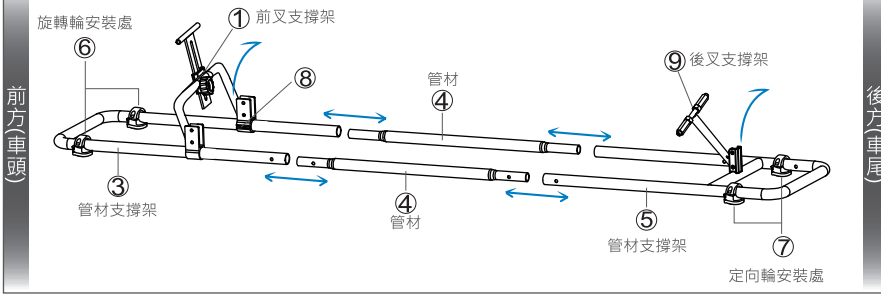
※使用前請詳閱並保存說明書※



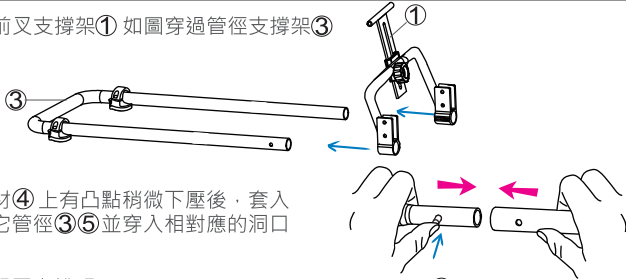
可拆式攜車架攜車袋-組裝

車袋最大尺寸

將所有管材依圖面依續安裝，本商品可依照不同車架尺寸做調整



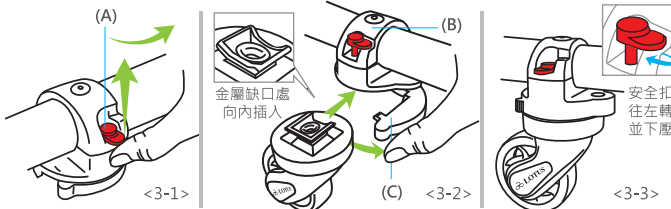
1) 將前叉支撐架①如圖穿過管徑支撐架③



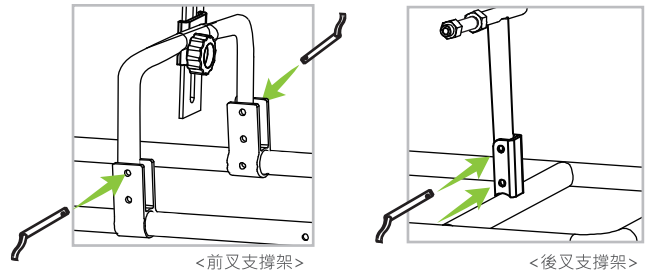
2) 管徑④上有凸點稍微下壓後，套入其它管徑③⑤並穿入相對應的洞口

3) 輪組固定說明：前叉支撐架使用『旋轉輪』固定於⑥；後叉支撐架使用『定向輪』固定於⑦

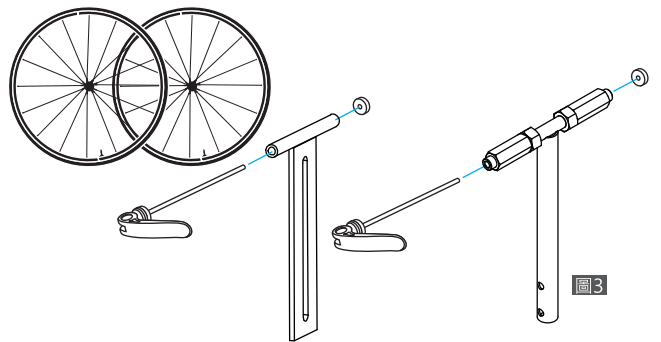
- 3-1. 將安全拉桿(A)向上拉起並轉向右邊
- 3-2. 將輪組座上座(B)的蓋子(C)打開並把輪子放入，再把輪組座上座的蓋子關閉
- 3-3. 將安全拉桿轉向左邊並向下壓，確認輪子不會脫出。



4) 將前/後叉支撐架垂直擺正後，運用插銷穿入相對應洞口做固定①⑨

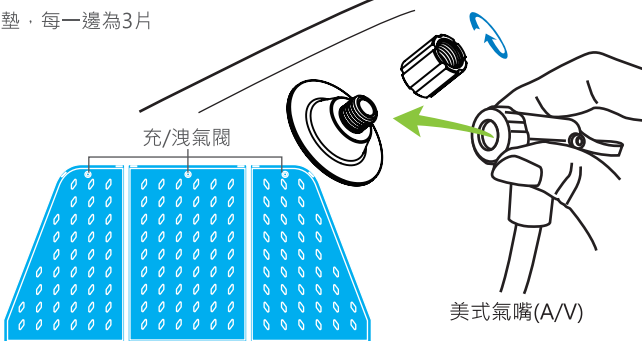


5) 將前/後變速轉至最小盤；請將剎車夾器打開(碟煞則不用)
6) 拆掉單車的前後輪，並將快拆安裝於如下圖3的相對應位置上(先別鎖緊，待會會做調整)



氣墊組裝方式

氣墊，每一邊為3片



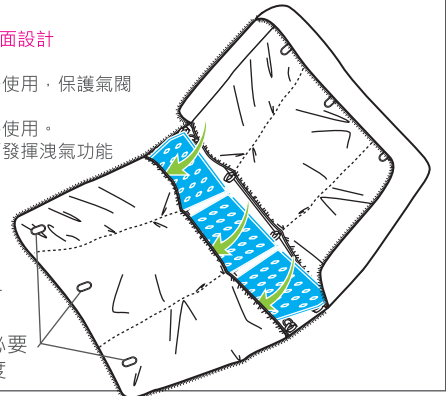
※灌氣請勿超過1 PSI或本產品附的手感氣墊，以避免氣墊瞬間爆裂破損，本公司一概不負責。
※若無法偵測1 PSI，則請參考本產品額外附的小氣圓球，參考手感樣。

1) 將氣墊以一般美式氣嘴(A/V)打氣筒進行充氣，氣體請充到適當的程度，再將蓋子(無凸起者)蓋好即可(上飛機時氣壓請小於1 PSI)

- ※請注意，蓋子有兩面設計
- 中間無凸起者：充氣後當做一般蓋子使用，保護氣閥
- 中間凸起者：洩氣時使用，僅需將蓋子蓋好即可發揮洩氣功能

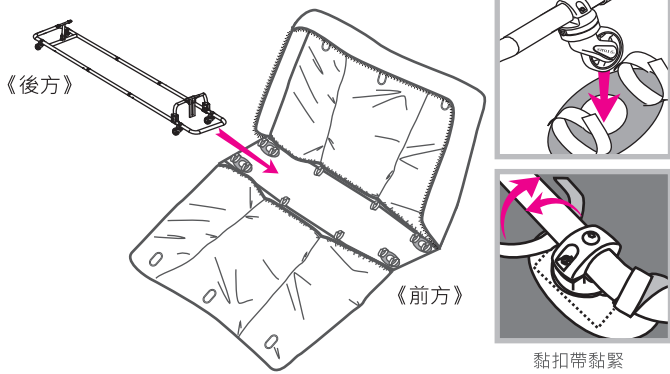
2) 將攜車袋攤開，充完氣的氣墊依續放入相對應的袋口裡
四方形氣墊請放中間
三角形氣墊請放兩側
最後將底部的黏扣帶黏好即可

此處氣閥，可在必要時調整氣墊飽和度

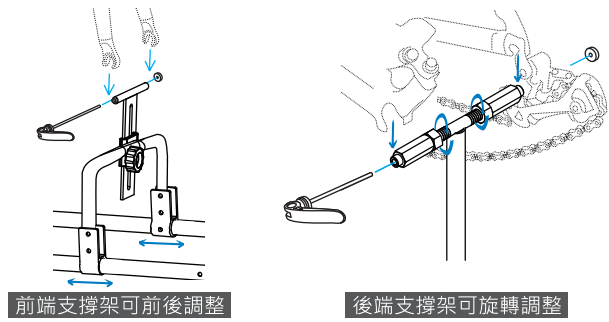


氣墊與攜車架/車架組裝方式

- 1) 將組好的攜車架放入攜車袋底部。四端的輪組對照四邊的洞孔穿入後，運用洞孔兩端的黏扣帶將攜車架和攜車袋相互固定



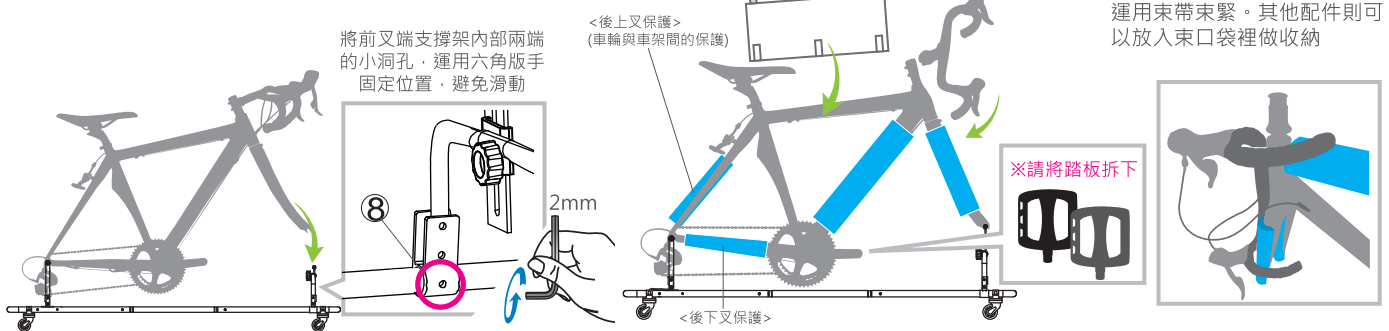
- 2) 先將前/後端支撐架之間的距離，依照自己的愛車尺寸調整到大概的合適距離，待會在車架安裝的速度上會較快。將前/後變速轉至最大盤，讓後變速器往內縮，降低被撞擊的機率。



- 3) 將車架的後叉套在後叉端支撐架，快拆稍微鎖緊再將前叉固定在前叉端支撐架，快拆稍微鎖緊前後兩端位置確認無誤後，將前/後快拆鎖緊固定

- 4) 將車架保護泡棉運用黏扣帶固定在車架上

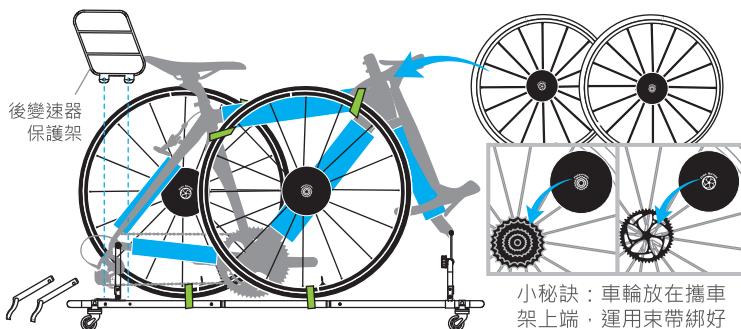
- 5) 握把/坐墊/踏板請按照各車架所需決定是否拆下。拆下的握把順著造型懸掛在前叉邊緣，運用束帶束緊。其他配件則可以放入束口袋裡做收納



- 6) 車輪碟煞/飛盤請使用保護套，再將車輪左右錯開放在車架兩邊，運用束帶將車輪/車架/攜車架綁緊固定

- 8) 將拉鍊合上後即完成所有安裝

提把襯墊設計，好拖拉、好舒適



本袋採用雙向鉤環拉鍊，可使用鎖將愛車鎖起



可拆式攜車架攜車袋-收納方式

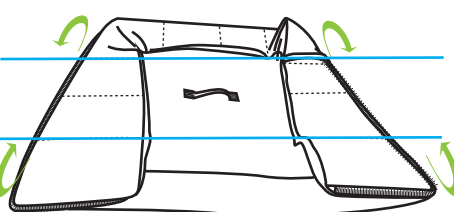
- 1) 將氣墊和可拆式攜車架從攜車袋裡拆下

- 5) 將快拆旋轉輪與定向輪拆下，底座請保留在攜車架上

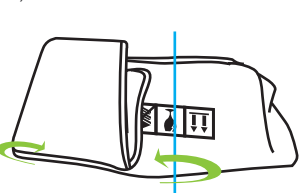
- 6) 攜車架拆卸時，兩邊雙管稍微往內壓，更容易拆卸

- 7) 氣墊洩氣時，請使用中間有凸點的蓋子。將蓋子蓋好即可發揮洩氣功能

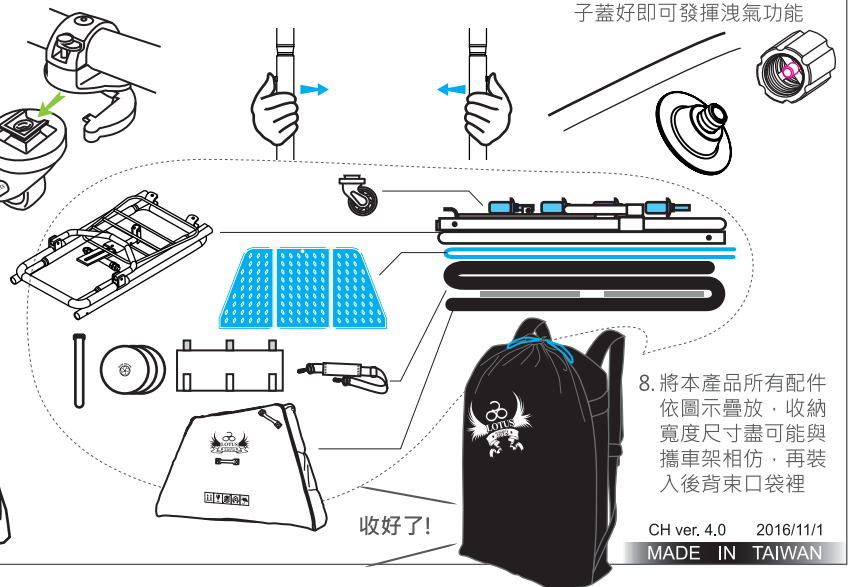
- 2) 主袋反面朝上，以藍色線為基準線。依照圖示將上下部分往內折形成三等份



- 3) 再依圖示左右往內折成三等份



- 4) 攜車袋收納完成



8. 將本產品所有配件依圖示疊放，收納寬度尺寸盡可能與攜車架相仿，再裝入後背束口袋裡

CH ver. 4.0 2016/11/1
MADE IN TAIWAN



注意事項

收納後的車架搭飛機時不能當隨身行李。請勿讓孩童接觸攜車袋、收納袋、及其他零件。它們不是玩具並可能有一定的危險性。請勿在氣墊上行走、站立、跳躍、或是躺臥。請勿在水上使用氣墊，氣墊不是救生筏。所有的氣墊在出貨前都經過100%檢測。請勿過度充氣，因為可能會導致氣墊爆裂或是漏氣。